



GLOBAL PHAREZ SITES LIMITED

**CORPORATE PROFILE**



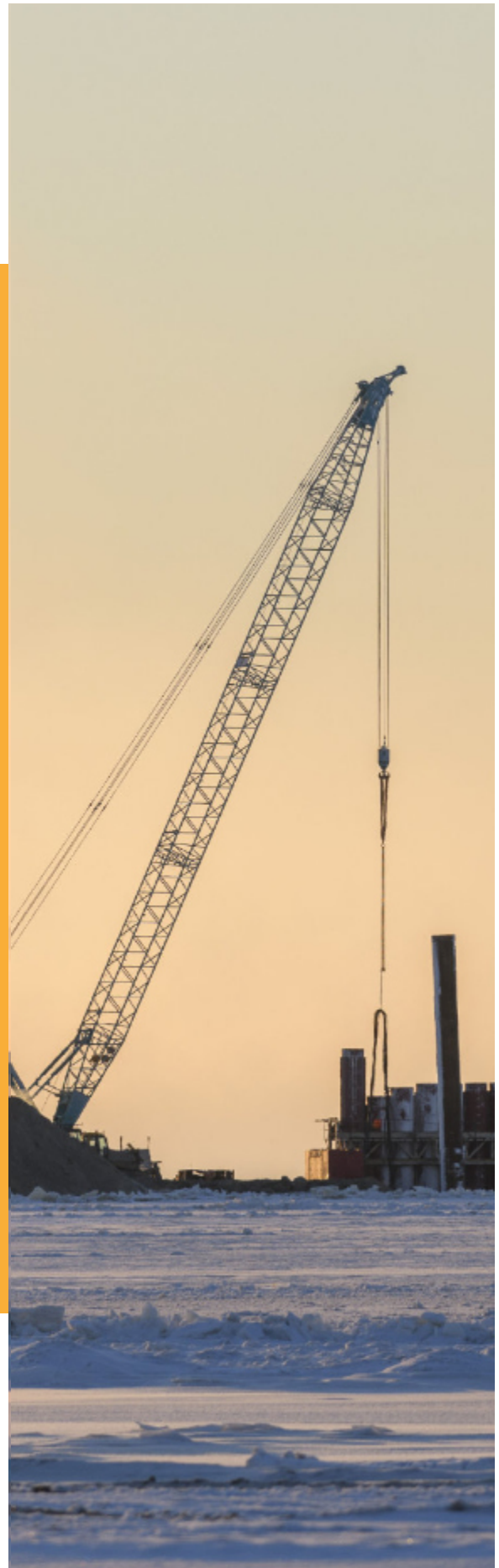
# *Contact Information*

Km 3, Igbo-Echie Road,  
Port Harcourt,  
Rivers–State, Nigeria.

Phone: +234(0)8060473603

Email: [info@gpharezltd.com](mailto:info@gpharezltd.com),  
[globalpharezsiteslimited@gmail.com](mailto:globalpharezsiteslimited@gmail.com)

Website: [www.gpharezltd.com](http://www.gpharezltd.com)





# *Table of Content*

<b>4</b>	Introduction
<b>6</b>	Past/Ongoing Projects
<b>8</b>	Management Staff
<b>12</b>	Project Equipment
<b>18</b>	Our Services

# Introduction

Global Pharez sites Ltd. is a registered Company in Nigeria specializing in the performance of Marine works, Marine equipment supply and consultancy services, Pipeline surveillance, Pipeline construction, Process Metering, Dredging works, Cofferdam construction/Dewatering, Building Works, Bridge works, Road works, Fabrication Works, Erection Works, Mechanical installations, Insulation works, painting & coating works, Other Civil Works, Equipment/Vehicle Leasing and General Engineering Services in the Nigerian Oil and Gas Industry.

The company also provides services in the fields of civil and structural engineering and project management.

**GLOBAL PHAREZ SITES LTD.** Has established close working relationship with competent foreign and local companies that offer unique services that can relied upon for certified equipment / personnel promptly.



## MAIN AREAS OF BUSINESS:

- ❖ **Marine construction works/Equipment supply and consultancy, Dredging Cofferdam construction/Dewatering, Shore protection,** other civil works for both offshore and onshore oil and gas infrastructure/facilities.
- ❖ **Facility integrity and maintenance works**
  - Insulation works., Corrosion control works.
  - Pipeline surveillance for integrity, real time leak detection and threat identification
- ❖ **Process metering- Non intrusive metering for all plant flows with a single fiber, regardless of pipe material or flow type.**
- ❖ **Civil Engineering construction such as:**
  - Earth works, Building construction/Design Concrete works, Roads Construction
  - Drainages, Bridge construction, Borehole drilling and water reticulation
- ❖ **Mechanical works for the oil & Gas industry such as:**
  - Pipeline Fabrication and Construction
  - Mechanical fabrication such as tanks, platforms etc.
  - Production manifolds, Structural Platform, Barge maintenance and Fabrication.
- ❖ **Procurement/Supply Services,** Supply of Engineering materials and allied services.
- ❖ **Equipment/Vehicle lease,** Lease of various kinds of marine and Engineering equipments.

**Project management services/provision** of expatriate manpower and experience local workforce for the construction industry and the oil and gas industry.





# Mission Statement

Our strategy aims to sustain the design, execute innovative construction, dredging and marine solutions while creating values for our clients to achieve their expectations. We strive to be the leading indigenous construction and marine contracting experts who consistently deliver the best in services to its clients timely, efficiently and safely.

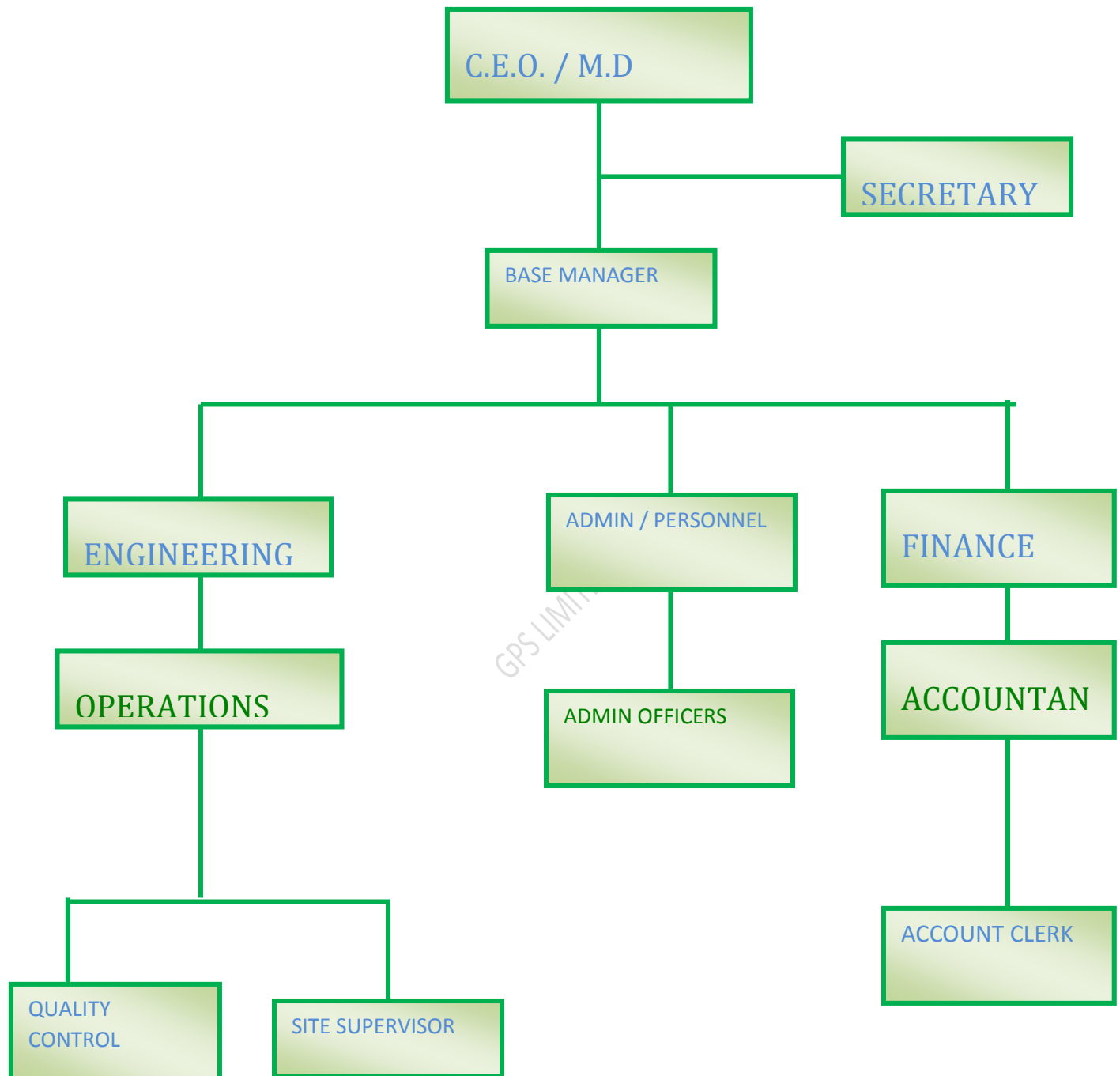
## Compliance

GLOBAL PHAREZ SITES LIMITED is a limited liability company, incorporated in Nigeria with the Corporate Affairs Commission and duly registered with the Department of Petroleum Resources (DPR) to provide construction solutions and more. Registered with the Nigerian Content Development Board to comply with sections 55 & 56 of the Act.



All equipment are duly registered and other regulatory bodies as required to carry out smooth operations.

# COMPANY ORGANIZATIONAL STRUCTURE



## **OUR CLIENTS**

<b>S/N</b>	<b>CLIENTS</b>
<b>1</b>	<b>NLNG</b>
<b>2</b>	<b>AKWA IBOM STATE MINISTRY OF WORKS</b>
<b>3</b>	<b>DAEWOO</b>
<b>4</b>	<b>NAOC</b>
<b>5</b>	<b>NUGI NIG LTD</b>
<b>6</b>	<b>FFEE ENGINEERING SERVICES</b>
<b>7</b>	<b>RIVERS STATE MINISTRY OF WORKS</b>
<b>8</b>	<b>SPDC</b>
<b>9</b>	<b>BRIDGSITE NIG LTD.</b>
<b>10</b>	<b>PRODECO</b>
<b>11</b>	<b>RIVIGO NIGERIA LIMITED</b>
<b>12</b>	<b>TOTAL E &amp; P</b>
<b>13</b>	<b>RAFUOL NIG LTD</b>
<b>14</b>	<b>OILSERV</b>
<b>15</b>	<b>ALCON</b>
<b>16</b>	<b>ONSHORE FZE</b>
<b>17</b>	<b>LEE ENGINEERING SERVICES</b>
<b>18</b>	<b>PELFACO NIGERIA LIMITED</b>
<b>19</b>	<b>OMITI ENGINEERING FZE</b>
<b>20</b>	<b>9 ANGLE WEST AFRICA</b>
<b>21</b>	<b>FIRST INDEPENDENT POWER LIMITED</b>
<b>22</b>	<b>USAID</b>



- 1. Bonney Forged Valve Licensee (B.F.E), Italy.**
- 2. Silixa, UK.(In process)**
- 3. Omb Valves S.P.A – Italy.**
- 4. Bonny Forge (BFE) Valves – Italy.**
- 5. Kitz. Corporation – Japan / USA**
- 6. Velan Valves – Canada/USA**
- 7. Smith Valves International – USA, England.**
- 8. SerckAudco – UK**
- 9. Stock harm Triangle –UK**
- 10. HP Valves – Netherlands.**
- 11. Flowserve Pumps Limited, USA**



# EQUIPMENT LIST

DESCRIPTION	QUANTITY
1. Mobile crane 30 tons	3
2. Ramp Barge 500 tons	2
3. Flat top Barge 300 tons	2
4. Water/Fuel Barge	4
5. Lincoln Welding Set	5
6. Generator	2
7. Air Compressor	5
8. Concrete Mixer	5
9. Poker Machine	2
10. Jack Hammer	3
11. Dumper	2
12. Pay Loader	5
13. Tractor	2
14. Tug Boat 180 HP	6
15. Truck	8
16. Pick up	10

17.	Car	7
18.	Mini Bus	7
19.	Hydraulic Crimping Tool	2
20.	Aluminum Ladder	4
21.	Hi-Pot Tester	5
22.	LV Calibrator (Digital)	3
23.	Multi – meter	3
24.	Primary Injection Tester	2
25.	Theodolite	2
26.	Level Instrument	2
27.	Distomat	1
28.	Echo Sounder	3
29.	Range	10
30.	Staff (Survey Instrument)	3
31	Track Excavator	1
32	Toyo Pumps	3
33	Pioneer predator 3000-18 dredge	1
34	Ellicott 670 cutter suction dredge	1
35	Dozer D6H	2
36	Swamp buggy	1
37	Compactors	3
38	Ellicott 1270 cutter suction dredge	1

## **SPECIFICATION OF SOME EQUIPMENT**

<b>PLANT/EQUIPMENT</b>	<b>CAPACITY</b>	<b>SIZE</b>	<b>ACTIVITIES</b>
<b>Toyo Pumps (DP75B-6)</b>	<b>360m<sup>3</sup>/hr</b>	<b>-</b>	<b>Cofferdam dredging/Dewatering</b>
<b>Track Excavator</b>	<b>Cat 225 with 3m<sup>3</sup> bucket</b>		<b>For excavation purposes.</b>
<b>Mobile Crane</b>	<b>30 tons</b>	<b>-</b>	<b>Pipe handling. Lifting of welding sets, Mixers and for general loading.</b>
<b>Ramp Barge</b>	<b>300 tons</b>	<b>25m x 10m</b>	<b>Transportation of Plant/ Equipment and materials such as sand, granite etc.</b>
<b>Flat top Barge</b>	<b>300 tons</b>	<b>24m x 9m</b>	<b>Transportation of water/fuel to job sites.</b>
<b>Welding Machine</b>	<b>301 – 400A/ 401 – 600</b>	<b>-</b>	<b>Welding</b>
<b>Generator Lister</b>	<b>60 KVA</b>	<b>-</b>	<b>Power supply</b>
<b>Generator (cat 3306)</b>	<b>169 KVA</b>	<b>-</b>	<b>Power supply</b>
<b>Air compressor atlas corpco</b>	<b>100 ltr. / sec.</b>	<b>-</b>	<b>Air supply and pressure testing</b>
<b>Concrete Mixer Wingate</b>	<b>400 ltr.</b>	<b>-</b>	<b>Concreting</b>
<b>Concrete Mixer Benford</b>	<b>400 ltr.</b>	<b>-</b>	<b>Concreting</b>

<b>Concrete Mixer Wingate</b>	<b>200 ltr.</b>	<b>-</b>	<b>Concreting</b>
<b>Mechanical Poker</b>	<b>-</b>	<b>-</b>	<b>Concrete vibration</b>
<b>Jack Hammer</b>	<b>-</b>	<b>-</b>	<b>Breaking of concrete and hard surface.</b>
<b>Dumper</b>	<b>-</b>	<b>-</b>	<b>Concrete Transportation. Materials transportation on site.</b>
<b>Pay loader cat 235</b>	<b>-</b>	<b>-</b>	<b>Offloading of materials from Barge. Handling of materials on site.</b>
<b>Tractor</b>	<b>-</b>	<b>-</b>	<b>Pipe transport/ material handling.</b>
<b>Tug Boat</b>	<b>2x 180 HP</b>	<b>-</b>	<b>Positioning and towing of Barges</b>
<b>Truck</b>	<b>-</b>	<b>-</b>	<b>Pipe an Equipment transportation</b>
<b>Hydraulic Crimping Tool</b>	<b>10,000 PSI</b>	<b>-</b>	<b>Electrical testing</b>
<b>Hi-Pot tester</b>	<b>11 – 33 KV</b>	<b>-</b>	<b>Testing of HV Cables</b>
<b>Megger tester</b>	<b>-</b>	<b>-</b>	<b>Insulation Resistance tester</b>
<b>IDAS and Carina sensing system</b>			<b>Pipeline surveillance and process metering.</b>





## WORK EXPERIENCE

S/N	CLIENT	DESCRIPTION	YEAR OF CONTRACT
1	MAESTROTIDE	SITE CLEARING FOR STERLING GLOBAL PROJECT, AKWA IBOM	2021
2	FIRST INDEPENDENT POWER LIMITED (FIPL) ELEME	PILING AND SHORE PROTECTION AT ELEME, RIVERS STATE	2021
3	USAID	ARIARIA WATER RECTICULATION PROJECT	2021
4	LEE ENGINEERING SERVICES	PIPE INSULATION WORKS AT WARRI REFINARY	2017
5	RIVIGO NIG LTD	REINFORCEMENT WORK FOR CONSTRUCTION OF AGIP FLYOVER BRIDGE	2007-2011
6	RAFOUL NIG LTD	CONSTRUCTION OF WOJI/ELELENWO BRIDGE AND ROAD	2017
7	RAFOUL NIG LTD	INSTALLATION OF SHEET PILE FOR SHORE PROTECTION ALONG WOJI-ELELENWO BRIDGE APPROACH	2017
8	PELFACO NIGERIA LIMITED	INSTALLATION OF SHEET PILES FOR SHORE PROTECTION AT OKERENKOKO , DELTA STATE . INSTALLATION OF SHEET PILES FOR SHORE PROTECTION AT SOKU, RIVERS STATE.	2018

S/N	CLIENT	DESCRIPTION	YEAR OF CONTRACT
9	FFEE ENGINEERING SERVICES	DRAINAGE CONSTRUCTION AT ETE IKOT ABASI, AKWA IBOM STATE & HOTEL CONSTRUCTION WORK AT IGURUTA	2015
10	SPDC/ Sub-contract STEVE INT. SERVICES	CONSTRUCTION OF CONCRETE/STEEL PIPE SUPPORT AT AGBADA GAS PLANT IGURUTA RIVERS STATE. WELDING FABRICATION AND INSTALLATION OF EARLY GAS PIPELINE IN AGBADA GAS PLANT	2015
11	NUGI NIG LTD	ROAD CONSTRUCTION AT OMOKU RIVERS STATE	2008
12	EARTWORKS	DREDGING OF SAND FOR IKUN – ABAWAN ROAD PROJRCT	2015-2020
13	MJD OILSERVICES LTD	CONSTRUCTION & PRECOMMISSIONING OF OF 12” X 48KM G/S TRANSMISSION PIPELINE IN THE SWAMP OF CALABAR TO UNICEM FACTORY	2011
14	FORTUNE ENERGY AND ENGINEERING COMPANY LIMITED	TANK FABRICATION WORKS FOR SAHARA(OMAQWA, PH)	2018
15	ONSHORE FZE (Sub contract from Gas map limited)	ONSHORE CORROSION CONTROL WORKS	2019

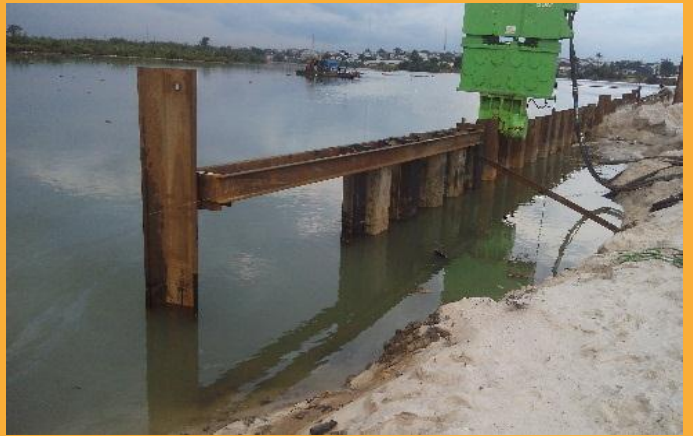




# Project SITES





















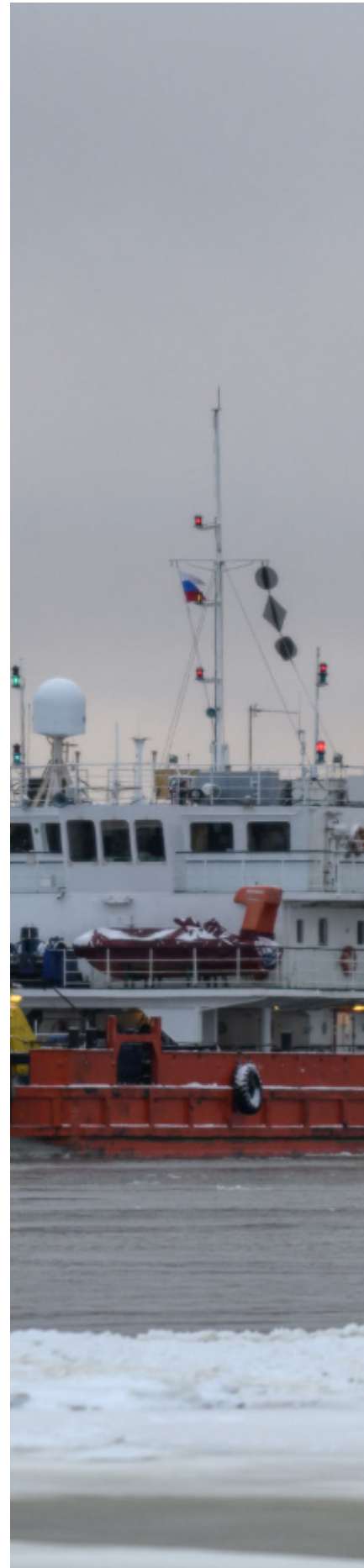


# Our Services

We recognise that although every project is unique in terms of complexity, challenge, size, budget, location and specific objectives, all projects have one common objective: Design, Procure and Operation at the most effective cost while on schedule. Most importantly, we also ensure operations run smoothly without hurting people, the environment or create an adverse effect on infrastructures. We add value by developing concepts that refine functional requirements within our client's financial constraints, schedule, quality, and regulatory compliance framework. Because the greatest opportunity to control project costs and risks lies in the quality of work at the concept selection and definition stage, we ensure that our clients get the best of services.

Construction and Dredging is our signature talent, one that we have perfected continually since our business was founded. We maintain that position in construction and dredging equipment and operational experience, supported by our partner(s).

The deployment of our in-house specialists and equipment allows us to execute engineering, procurement and construction contracts in the public, private, marine, oil & gas sector..





## Prefabricated Vertical Drains

Our Prefabricated Vertical Drains or PVD is also known as Wick drains speciality equipment is used in soft, compressible soil to allow drainage tracks for pore water.



## Piling

We have a fleet of speciality equipment that enables us to gain access to remote locations and water-based environments. This ability makes **GPS** the ideal contractor to build bulkheads, cellular structures, open cell structures, cofferdams, bridge abutments, and more.



## Fabrication Yard

We have the resources, skill, and experience to handle virtually any size fabrication project – from small skids to multiple-level platforms. We are your single-source solution to meet your exact specifications and deliver your project on time and within budget.



## Infrastructure

Multi disciplinary design, engineering and project management expertise for buildings, transportation, utilities and the environment. We work for both public and private sector clients on a diverse mix of large scale, complex projects.



## Project Management

Essential front-end services, including capital budgeting, financial advisory, assets, costs and construction project management.



## Insurance, Quality & HSE

We are fully aware of associated risks involved during project execution. We have insured our staff members and equipment, and also ensuring no life or equipment is lost during project execution.



**Km 3, Igbo-Echie Road,  
Port Harcourt,  
Rivers-State, Nigeria.**

**Phone: +234(0)8060473603**

**Email: [info@gpharezltd.com](mailto:info@gpharezltd.com),  
[globalpharezsiteslimited@gmail.com](mailto:globalpharezsiteslimited@gmail.com)**

**Website: [www.gpharezltd.com](http://www.gpharezltd.com)**

